

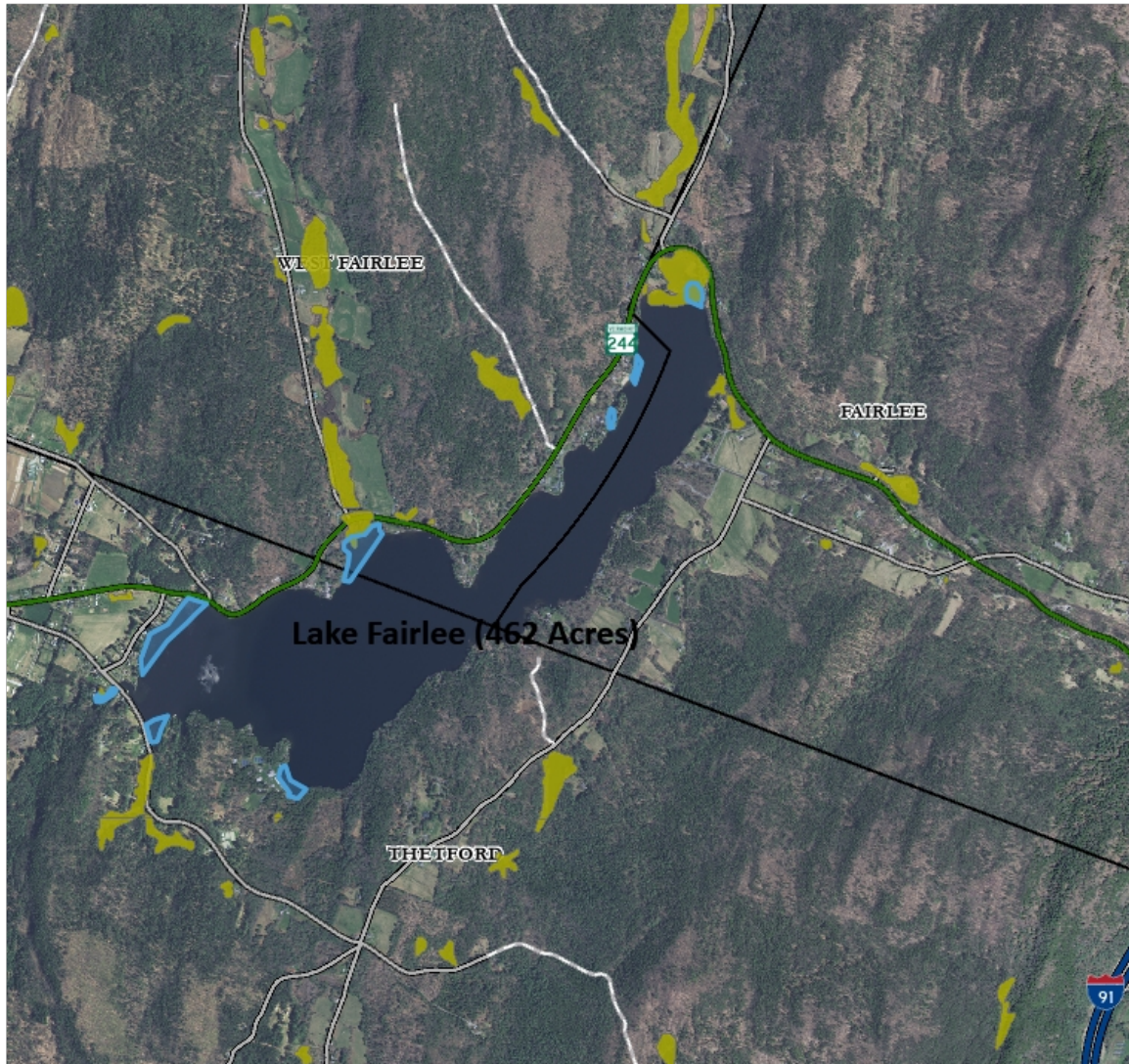
Notice of Work



2023 Proposed DASH Control Areas

Vermont Agency of Natural Resources

vermont.gov



LEGEND

- Wetland - VSWI**
- Class 1 Wetland
 - Class 2 Wetland
 - Wetland Buffer
- Roads**
- Interstate
 - US Highway; 1
 - State Highway

NOTES

Map created using ANR GIS mapping technology.

1: 27,952

August 8, 2023



1,420.0 0 710.00 1,420.0 Meters

WGS_1984_Web_Mercator_Auxiliary_Sphere
© Vermont Agency of Natural Resources

1" = 2329 Ft. 1cm = 280 Meters
THIS MAP IS NOT TO BE USED FOR NAVIGATION

DISCLAIMER: This map is for general reference only. Data layers that appear on this map may or may not be accurate, current, or otherwise reliable. ANR and the State of Vermont make no representations of any kind, including but not limited to, the warranties of merchantability, or fitness for a particular use, nor are any such warranties to be implied with respect to the data on this map.

2022 Herbicide Treatment Areas Wetland Areas

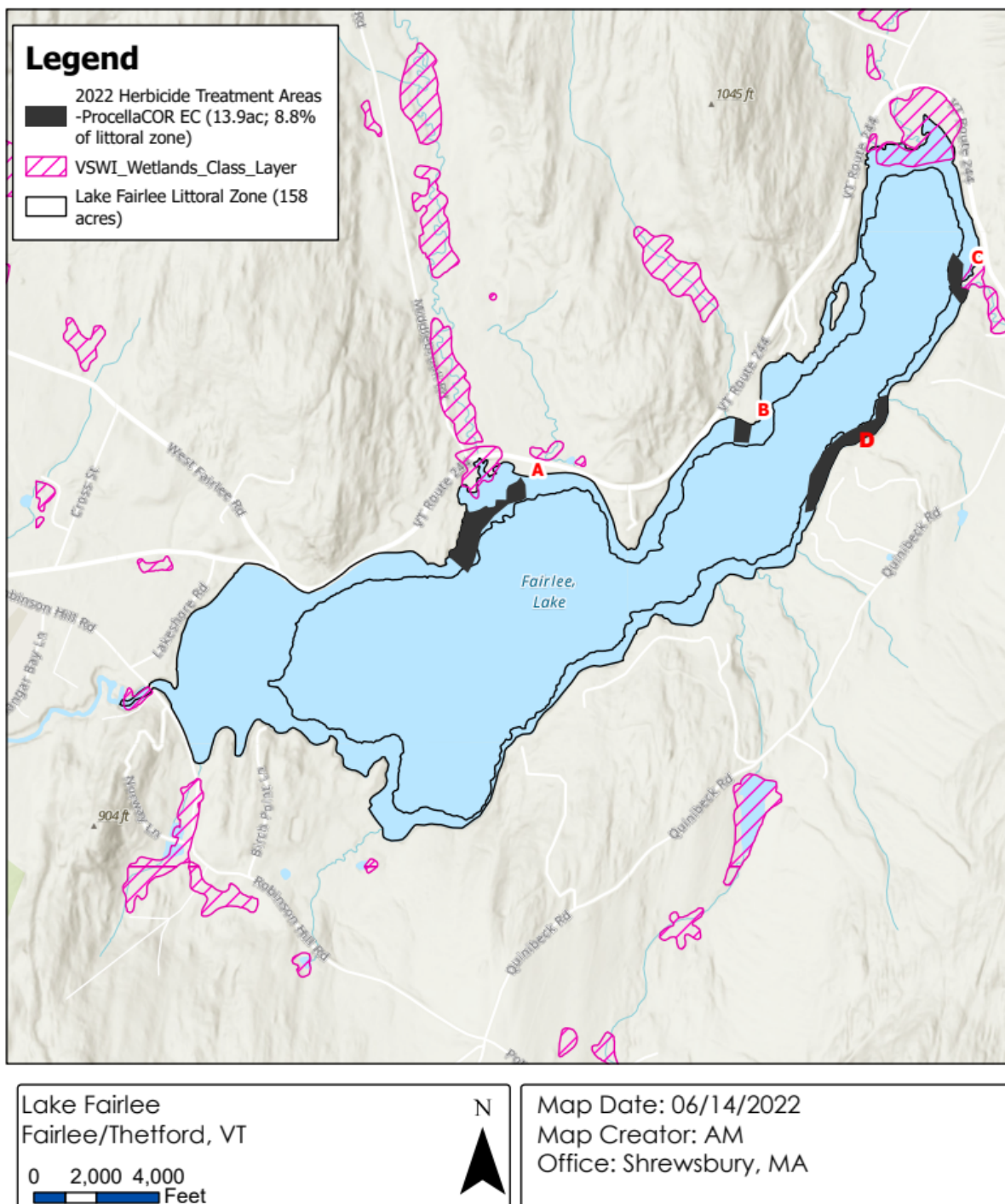


Figure 7. Non-Intercept Eurasian watermilfoil Distribution

